



THE ACRES

FLOOR PLANS



The background features a dark, moody scene with out-of-focus golden lights, possibly from a fireplace or candles. Overlaid on this are large, flowing, organic shapes in shades of taupe and muted sage green. The text is centered within the sage green area.

# 3-BEDROOM VILLAS

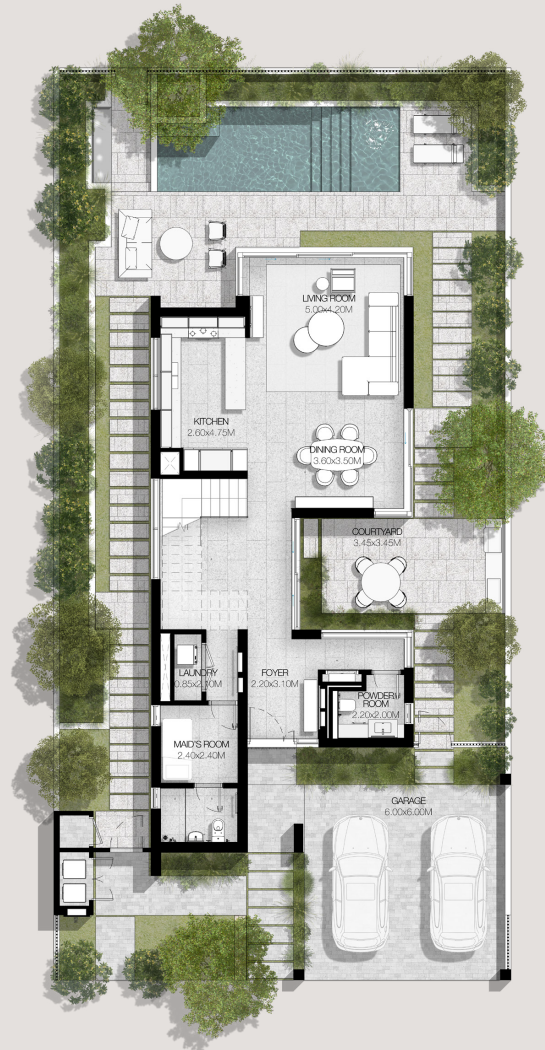


THE ACRES

## 3 BEDROOMS

### VILLA TYPE A-3BR

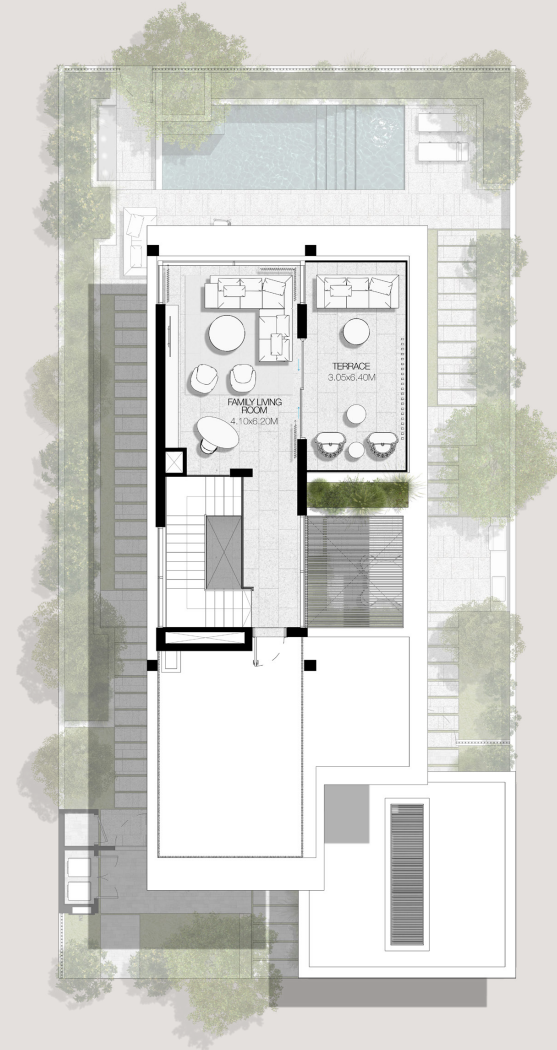
TOTAL AREA: 363.74 SQM | 3,915.26 SQFT



GROUND LEVEL



FIRST LEVEL



SECOND LEVEL

DISCLAIMER: PLANS, DETAILS AND UNIT ORIENTATION INCLUDED ARE INDICATIVE ONLY AND ARE SUBJECT TO CHANGE BY THE DEVELOPER/SELLER AT ITS SOLE DISCRETION WITHOUT NOTICE AND/OR LIABILITY. ALL IMAGES, INCLUDING FEATURES, FINISHES, FURNISHINGS, VIEW AND SCALE ARE ILLUSTRATIVE ONLY. FINAL AREAS, ORIENTATION, DIMENSIONS, LAYOUT AND MATERIALS MAY DIFFER FROM THOSE STATES.







THE ACRES

# 3 BEDROOMS

## VILLA TYPE A-3BR(M)

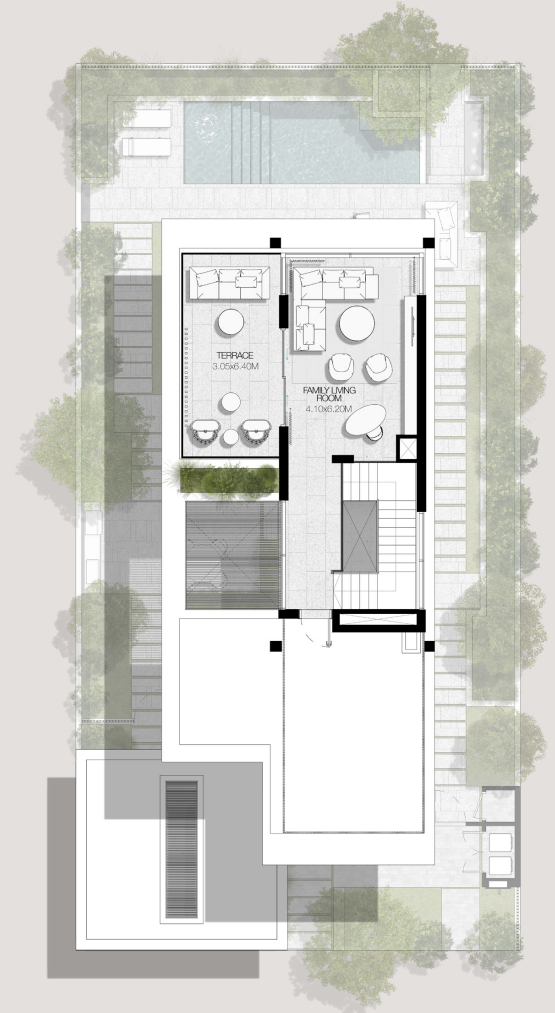
TOTAL AREA: 363.74 SQM | 3,915.26 SQFT



GROUND LEVEL



FIRST LEVEL



SECOND LEVEL

DISCLAIMER: PLANS, DETAILS AND UNIT ORIENTATION INCLUDED ARE INDICATIVE ONLY AND ARE SUBJECT TO CHANGE BY THE DEVELOPER/SELLER AT ITS SOLE DISCRETION WITHOUT NOTICE AND/OR LIABILITY. ALL IMAGES, INCLUDING FEATURES, FINISHES, FURNISHINGS, VIEW AND SCALE ARE ILLUSTRATIVE ONLY. FINAL AREAS, ORIENTATION, DIMENSIONS, LAYOUT AND MATERIALS MAY DIFFER FROM THOSE STATES.







THE ACRES

## 3 BEDROOMS

### VILLA TYPE B-3BR

TOTAL AREA: 283.22 SQM | 3,048.55 SQFT



GROUND LEVEL



FIRST LEVEL

DISCLAIMER: PLANS, DETAILS AND UNIT ORIENTATION INCLUDED ARE INDICATIVE ONLY AND ARE SUBJECT TO CHANGE BY THE DEVELOPER/SELLER AT ITS SOLE DISCRETION WITHOUT NOTICE AND/OR LIABILITY. ALL IMAGES, INCLUDING FEATURES, FINISHES, FURNISHINGS, VIEW AND SCALE ARE ILLUSTRATIVE ONLY. FINAL AREAS, ORIENTATION, DIMENSIONS, LAYOUT AND MATERIALS MAY DIFFER FROM THOSE STATES.





THE ACRES

## 3 BEDROOMS

VILLA TYPE B-3BR(M)

TOTAL AREA: 283.23 SQM | 3,048.66 SQFT



GROUND LEVEL



FIRST LEVEL

DISCLAIMER: PLANS, DETAILS AND UNIT ORIENTATION INCLUDED ARE INDICATIVE ONLY AND ARE SUBJECT TO CHANGE BY THE DEVELOPER/SELLER AT ITS SOLE DISCRETION WITHOUT NOTICE AND/OR LIABILITY. ALL IMAGES, INCLUDING FEATURES, FINISHES, FURNISHINGS, VIEW AND SCALE ARE ILLUSTRATIVE ONLY. FINAL AREAS, ORIENTATION, DIMENSIONS, LAYOUT AND MATERIALS MAY DIFFER FROM THOSE STATES.





# 4-BEDROOM VILLAS





THE ACRES

# 4 BEDROOMS

## VILLA TYPE C-4BR

TOTAL AREA: 452.90 SQM | 4,874.92 SQFT



GROUND LEVEL



FIRST LEVEL



SECOND LEVEL

DISCLAIMER: PLANS, DETAILS AND UNIT ORIENTATION INCLUDED ARE INDICATIVE ONLY AND ARE SUBJECT TO CHANGE BY THE DEVELOPER/SELLER AT ITS SOLE DISCRETION WITHOUT NOTICE AND/OR LIABILITY. ALL IMAGES, INCLUDING FEATURES, FINISHES, FURNISHINGS, VIEW AND SCALE ARE ILLUSTRATIVE ONLY. FINAL AREAS, ORIENTATION, DIMENSIONS, LAYOUT AND MATERIALS MAY DIFFER FROM THOSE STATES.







THE ACRES

# 4 BEDROOMS

## VILLA TYPE C-4BR(M)

TOTAL AREA: 452.89 SQM | 4,874.87 SQFT



GROUND LEVEL



FIRST LEVEL



SECOND LEVEL

DISCLAIMER: PLANS, DETAILS AND UNIT ORIENTATION INCLUDED ARE INDICATIVE ONLY AND ARE SUBJECT TO CHANGE BY THE DEVELOPER/SELLER AT ITS SOLE DISCRETION WITHOUT NOTICE AND/OR LIABILITY. ALL IMAGES, INCLUDING FEATURES, FINISHES, FURNISHINGS, VIEW AND SCALE ARE ILLUSTRATIVE ONLY. FINAL AREAS, ORIENTATION, DIMENSIONS, LAYOUT AND MATERIALS MAY DIFFER FROM THOSE STATES.





THE ACRES

# 4 BEDROOMS

## VILLA TYPE D-4BR

TOTAL AREA: 380.10 SQM | 4,091.36 SQFT



GROUND LEVEL



FIRST LEVEL

DISCLAIMER: PLANS, DETAILS AND UNIT ORIENTATION INCLUDED ARE INDICATIVE ONLY AND ARE SUBJECT TO CHANGE BY THE DEVELOPER/SELLER AT ITS SOLE DISCRETION WITHOUT NOTICE AND/OR LIABILITY. ALL IMAGES, INCLUDING FEATURES, FINISHES, FURNISHINGS, VIEW AND SCALE ARE ILLUSTRATIVE ONLY. FINAL AREAS, ORIENTATION, DIMENSIONS, LAYOUT AND MATERIALS MAY DIFFER FROM THOSE STATES.







THE ACRES

## 4 BEDROOMS

### VILLA TYPE D-4BR(M)

TOTAL AREA: 380.10 SQM | 4,091.36 SQFT



GROUND LEVEL



FIRST LEVEL

DISCLAIMER: PLANS, DETAILS AND UNIT ORIENTATION INCLUDED ARE INDICATIVE ONLY AND ARE SUBJECT TO CHANGE BY THE DEVELOPER/SELLER AT ITS SOLE DISCRETION WITHOUT NOTICE AND/OR LIABILITY. ALL IMAGES, INCLUDING FEATURES, FINISHES, FURNISHINGS, VIEW AND SCALE ARE ILLUSTRATIVE ONLY. FINAL AREAS, ORIENTATION, DIMENSIONS, LAYOUT AND MATERIALS MAY DIFFER FROM THOSE STATES.



# 5-BEDROOM VILLAS



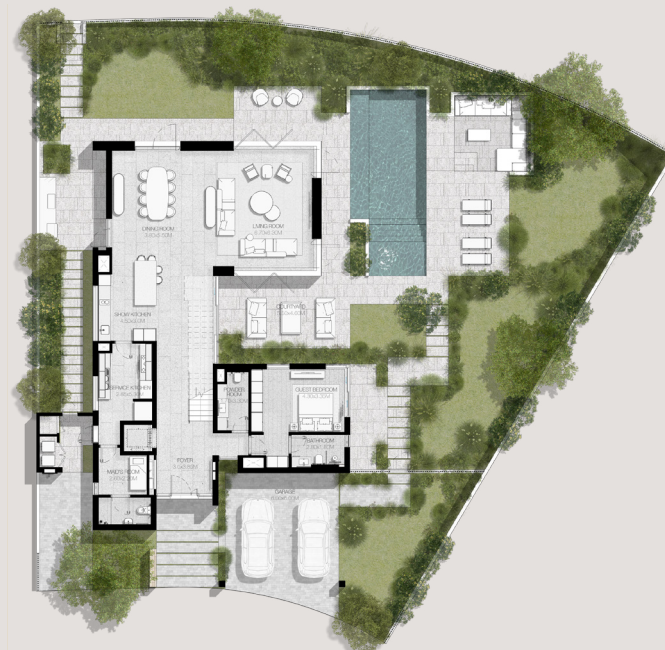


THE ACRES

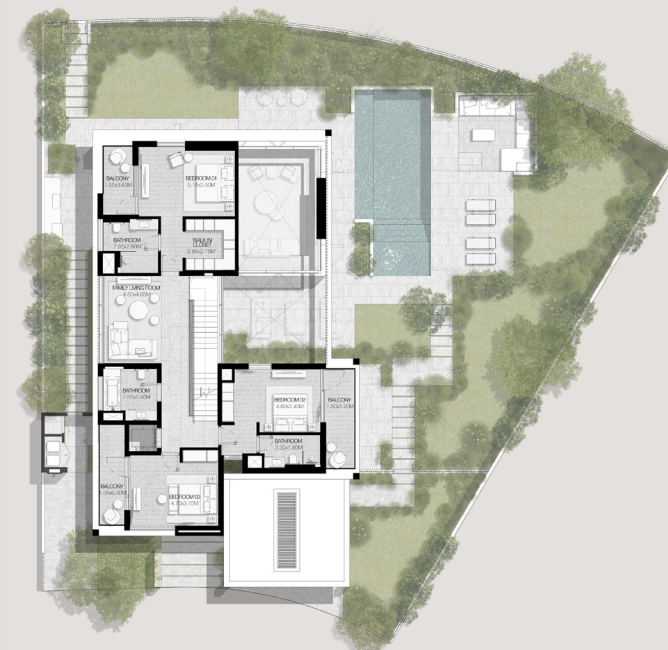
5 BEDROOMS

VILLA TYPE E-5BR

TOTAL AREA: 552.25 SQM | 5,944.37 SQFT



GROUND LEVEL



FIRST LEVEL



SECOND LEVEL

DISCLAIMER: PLANS, DETAILS AND UNIT ORIENTATION INCLUDED ARE INDICATIVE ONLY AND ARE SUBJECT TO CHANGE BY THE DEVELOPER/SELLER AT ITS SOLE DISCRETION WITHOUT NOTICE AND/OR LIABILITY. ALL IMAGES, INCLUDING FEATURES, FINISHES, FURNISHINGS, VIEW AND SCALE ARE ILLUSTRATIVE ONLY. FINAL AREAS, ORIENTATION, DIMENSIONS, LAYOUT AND MATERIALS MAY DIFFER FROM THOSE STATES.



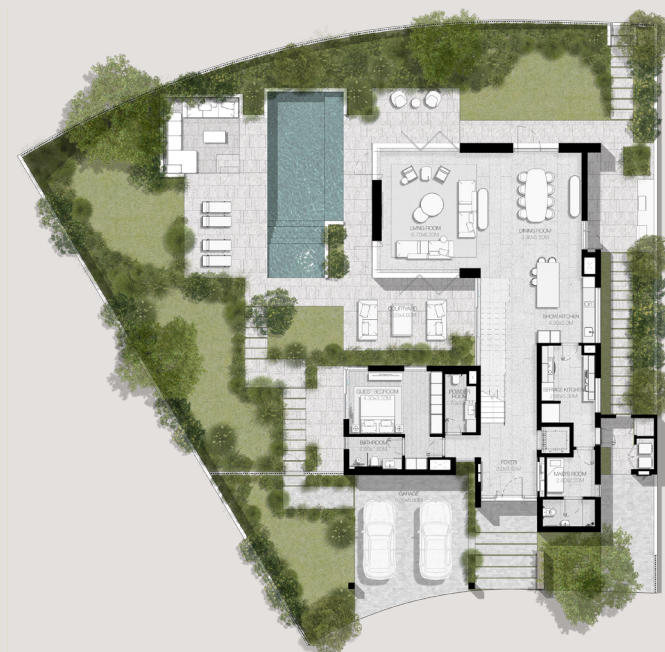


THE ACRES

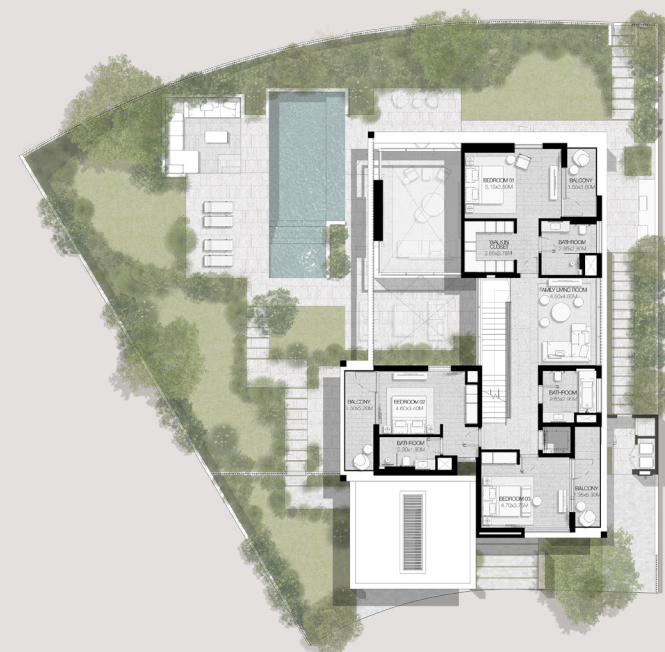
# 5 BEDROOMS

VILLA TYPE E-5BR(M)

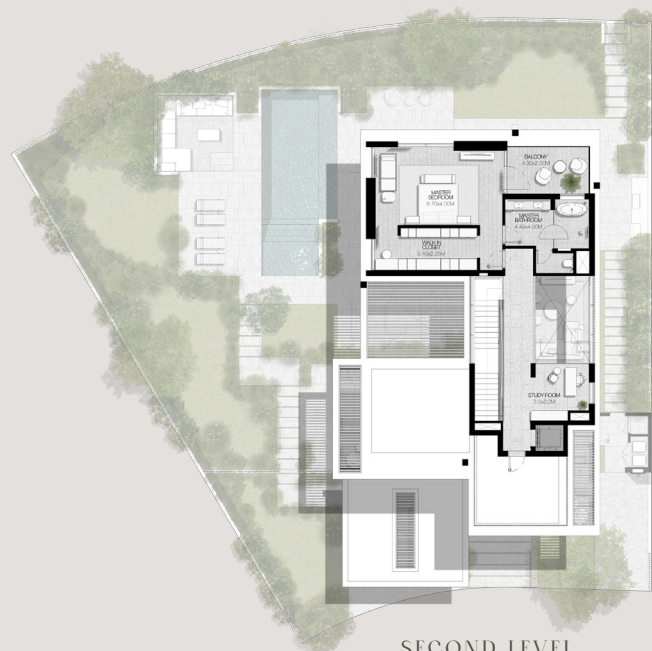
TOTAL AREA: 552.25 SQM | 5,944.38 SQFT



GROUND LEVEL



FIRST LEVEL



SECOND LEVEL

DISCLAIMER: PLANS, DETAILS AND UNIT ORIENTATION INCLUDED ARE INDICATIVE ONLY AND ARE SUBJECT TO CHANGE BY THE DEVELOPER/SELLER AT ITS SOLE DISCRETION WITHOUT NOTICE AND/OR LIABILITY. ALL IMAGES, INCLUDING FEATURES, FINISHES, FURNISHINGS, VIEW AND SCALE ARE ILLUSTRATIVE ONLY. FINAL AREAS, ORIENTATION, DIMENSIONS, LAYOUT AND MATERIALS MAY DIFFER FROM THOSE STATES.







THE ACRES

# 5 BEDROOMS

## VILLA TYPE F-5BR

TOTAL AREA: 557.55 SQM | 6,001.42 SQFT



GROUND LEVEL



FIRST LEVEL



SECOND LEVEL

DISCLAIMER: PLANS, DETAILS AND UNIT ORIENTATION INCLUDED ARE INDICATIVE ONLY AND ARE SUBJECT TO CHANGE BY THE DEVELOPER/SELLER AT ITS SOLE DISCRETION WITHOUT NOTICE AND/OR LIABILITY. ALL IMAGES, INCLUDING FEATURES, FINISHES, FURNISHINGS, VIEW AND SCALE ARE ILLUSTRATIVE ONLY. FINAL AREAS, ORIENTATION, DIMENSIONS, LAYOUT AND MATERIALS MAY DIFFER FROM THOSE STATES.





THE ACRES

## 5 BEDROOMS

## VILLA TYPE F-5BR(M)

TOTAL AREA: 557.55 SQM | 6,001.42 SQFT



GROUND LEVEL



FIRST LEVEL



## SECOND LEVEL

DISCLAIMER: PLANS, DETAILS AND UNIT ORIENTATION INCLUDED ARE INDICATIVE ONLY AND ARE SUBJECT TO CHANGE BY THE DEVELOPER/SELLER AT ITS SOLE DISCRETION WITHOUT NOTICE AND/OR LIABILITY. ALL IMAGES, INCLUDING FEATURES, FINISHES, FURNISHINGS, VIEW AND SCALE ARE ILLUSTRATIVE ONLY. FINAL AREAS, ORIENTATION, DIMENSIONS, LAYOUT AND MATERIALS MAY DIFFER FROM THOSE STATES.







For more information or to book a viewing tour get in touch with our Off Plan & Investment team today:

**+971 4 302 5800**

**[info@hausandhaus.com](mailto:info@hausandhaus.com)**

**[www.hausandhaus.com](http://www.hausandhaus.com)**

**Your trusted and recommended Real Estate Group**